

# Shareholder Information

Information for Shareholders (As of March 31, 2020)

## Listing

First Section of the Tokyo Stock Exchange

### Ticker symbol

4182

### Total number of authorized shares

492,428,000

### Number of outstanding shares

225,739,199

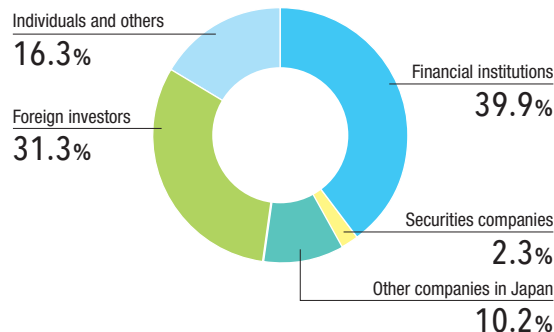
### Stock transaction units

100 - shares

### Number of shareholders

24,777

## Composition of shareholders



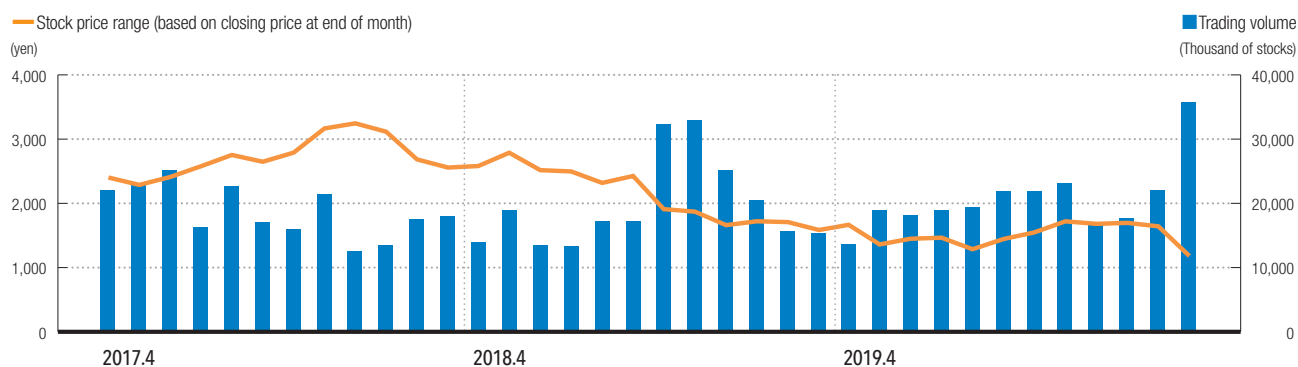
## Major shareholders

Name of shareholder	Number of shares held (thousands)	Percentage of total outstanding shares
The Master Trust Bank of Japan, Ltd. (Trust Account)	15,260	7.3%
Japan Trustee Services Bank, Ltd. (Trust Account)	9,346	4.5%
Meiji Yasuda Life Insurance Company	8,797	4.2%
Nippon Life Insurance Company	8,795	4.2%
The Norinchukin Bank	5,026	2.4%
AGC Inc.	4,835	2.3%
Japan Trustee Services Bank, Ltd. (Trust Account 5)	3,711	1.8%
JP MORGAN CHASE BANK 385151	3,183	1.5%
The Bank of Yokohama, Ltd.	3,085	1.5%
J.P. MORGAN BANK LUXEMBOURG S.A. 1300000	2,794	1.3%

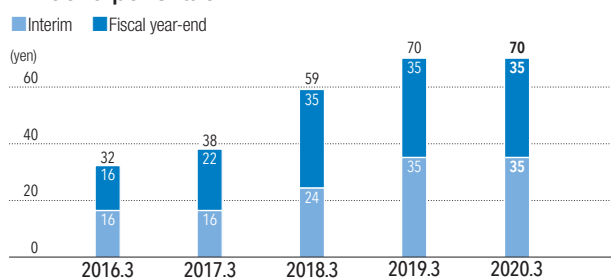
1. MGC holds 17,758 thousand shares of treasury stock, which is not included in the above list of major shareholders.

2. Percentage of total outstanding shares does not include treasury stock.

## Monthly stock price range and trading volume



## Dividend per share



Note: With an effective date of October 1, 2016, MGC conducted a reverse stock split for MGC's ordinary shares on a 2:1 basis. As a result, the share price, market trading volume and dividend per share in the graphs are calculated assuming that the reverse stock split had been conducted at the beginning of April, 2015.