

Shareholder Information

Information for Shareholders (As of March 31, 2018)

Listing

First Section of the Tokyo Stock Exchange

Ticker symbol

4182

Total number of authorized shares

492,428,000

Number of outstanding shares

231,739,199

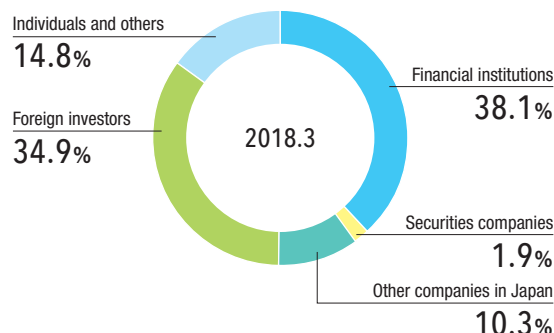
Stock transaction units

100 - shares

Number of shareholders

20,088

Composition of shareholders



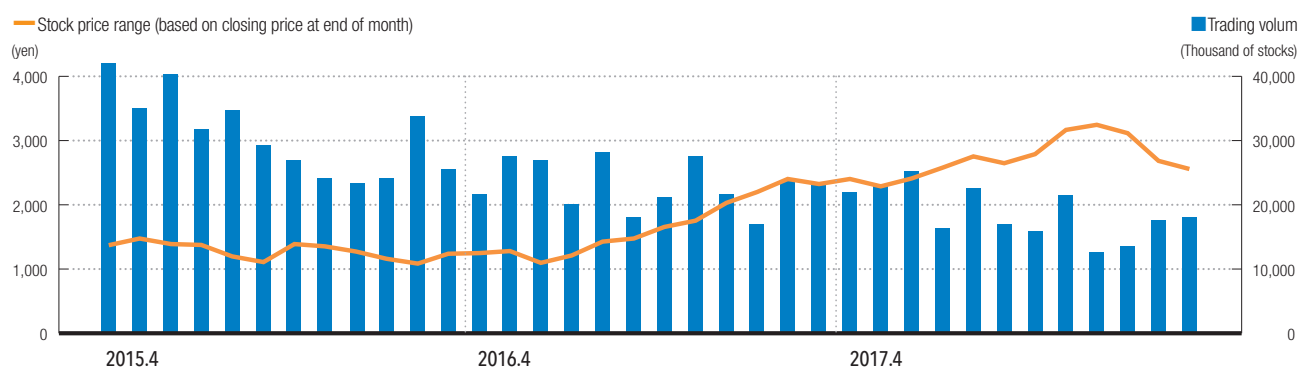
Major shareholders

Name of shareholder	Number of shares held (thousands)	Percentage of total outstanding shares
Japan Trustee Services Bank, Ltd. (Trust Account)	10,155	4.8%
The Master Trust Bank of Japan, Ltd. (Trust Account)	9,119	4.3%
Meiji Yasuda Life Insurance Company	8,797	4.1%
Nippon Life Insurance Company	8,795	4.1%
The Norinchukin Bank	5,026	2.4%
Asahi Glass Co., Ltd.	4,835	2.3%
CHASE MANHATTAN BANK GTS CLIENTS ACCOUNT ESCROW	4,048	1.9%
GOVERNMENT OF NORWAY	3,896	1.8%
Japan Trustee Services Bank, Ltd. (Trust Account 9)	3,836	1.8%
Mitsubishi Tokyo UFJ Trust and Banking Corporation	3,506	1.6%

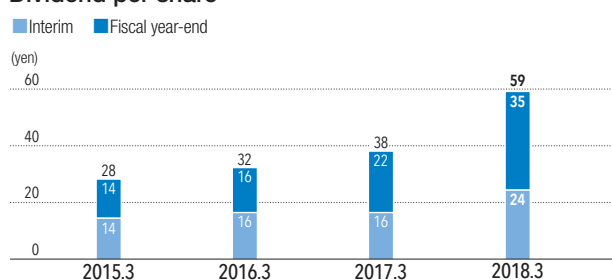
1. MGC holds 18,135 thousand shares of treasury stock, which is not included in the above list of major shareholders.

2. Percentage to Total Shares Outstanding does not include treasury stock.

Monthly stock price range and trading volume



Dividend per share



Notes: With and effective date of October 1, 2016, MGC conducted a reverse stock split for MGC's ordinary shares on a 2:1 basis. As a result, the share price, market trading volume and dividend per share in the graph are calculated assuming that the reverse stock split had been conducted at the beginning of April, 2014.