
Product Information

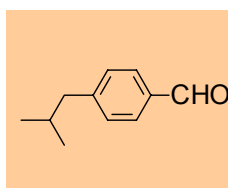
IBBAL

--- p-Isobutylbenzaldehyde ---



MITSUBISHI GAS CHEMICAL COMPANY, INC.

Description p-Isobutylbenzaldehyde is a clear colorless liquid.
Chemical formula: C₁₁H₁₄O



Molecular weight: 162.2

Typical Properties	Appearance, visual	Colorless liquid
	Purity, %	99.6
	Color, HAZEN	10
	Boiling Point, °C	240
	Melting Point, °C	Not known
	Vapor Pressure, 89°C, mmHg	Not known
	Acid value, mgKOH/g	0.1
	Specific gravity, 20°C	0.960
	Odor	Aromatic odor
	Solubility	Soluble in ethanol, ether and toluene Insoluble in water

Sales Specifications	Purity, GC, %	96 min
	Color, spectrophotometry, HAZEN	100 max
	Acid value, titration, mgKOH/g	3 max

Applications Additives for resins, Pharmaceutical intermediate
Agricultural intermediate, Flavor and Fragrance

Container Information Available in 190 Kgs steel drum.

Precautions for Safe Handling and Use

Extinguishing media

Small fire: Carbon dioxide,

Large fire: Water spray or alcohol foam

Health safety precautions

Avoid contact with eyes, skin and clothing.

Avoid breathing vapor.

Wash thoroughly the face, the hands after handling.

Storage conditions

Store in cool and dry place.

For specific safety, handling and toxicity information, please refer to the current Material Safety Data Sheet.

First Aid

If inhaled

Remove to fresh air immediately. Call a physician.

Skin contact

Wash skin thoroughly with a plenty of soap and water while removing contaminated clothing and shoed.

Eye contact

Immediately flush eyes with a plenty of water enough.

Call a physician.

If swallowed

Induce vomiting if victim is concious. Call a physician.

Never give anything by mouth to an unconscious person.

Chemical Registration Numbers

CAS: 40150-98-9

The information presented herein is believed to be accurate and reliable, but is presented without guarantee or responsibility on the part of Mitsubishi Gas Chemical Company. It is the responsibility of the users to comply with all applicable laws and regulations and to provide for a safe workplace. The user should consider any health or safety hazards or information contained herein only as a guide, and should take those precautions which are necessary or prudent to instruct employees and to develop work practice procedures in order to promote a safe work environment. Further, nothing contained herein shall be taken as an inducement or recommendation to manufacture or use any of the herein materials or processes in violation of existing or future patents.



MITSUBISHI GAS CHEMICAL COMPANY, INC.

Americas 520 Madison Avenue, 17th floor, New York, NY 10022 ♦ Phone: +1-212-752-4620 ♦ Fax: +1-212-758-4012

Europe Immermannstrasse 43, 40210, Dusseldorf, Germany ♦ Phone: +49-211-363088 ♦ Fax: +49-211-354457

Head Office 5-2, 2-chome, Marunouchi, Chiyoda-ku, Tokyo 100-8324 Japan ♦ Phone: +81-3-3283-4812 ♦ Fax: +81-3-3214-0938